



# The O'Neal School

## Profile for 2009-2010

**Alan K. Barr**  
Headmaster

**Woody Wilder**  
Upper School Director

**Blanche Hancock**  
Assistant Upper School Director  
College Counselor

**3300 Airport Road / P.O. Box 290 • Southern Pines, NC 28388-0290**  
**Phone: (910) 692-6920 • Fax: (910) 692-9234 • www.ONealSchool.org • CEEB Code 343675**

### SCHOOL

The O'Neal School is an independent, co-educational day school for students in Pre-Kindergarten through Grade 12. Enrollment for the 2009-2010 school year is 420; Upper School enrollment is 160. Located in the Sandhills of North Carolina, the 40-acre campus includes Upper, Middle, and Lower School classroom buildings with a library, computer center, theater, music and art rooms, 2 gymnasiums, indoor swimming pool, six tennis courts, and athletic fields. O'Neal draws students of varied socio-economic backgrounds from 20 towns in and around Moore County. Since its founding in 1971, O'Neal has adhered to a non-discriminatory policy in admissions and the administration of all school programs.

### ACCREDITATION & MEMBERSHIPS

O'Neal is accredited jointly by the Southern Association of Colleges and Schools (SACS) and the Southern Association of Independent School (SAIS). Active memberships are held in the National Association of Independent Schools (NAIS), the North Carolina Association of Independent Schools (NCAIS), the Southern Association of Independent Schools (SAIS), the Cum Laude Society, the National Honor Society, and School and Tuition Aid Data Services (TADS).

### LEADERSHIP OPPORTUNITIES

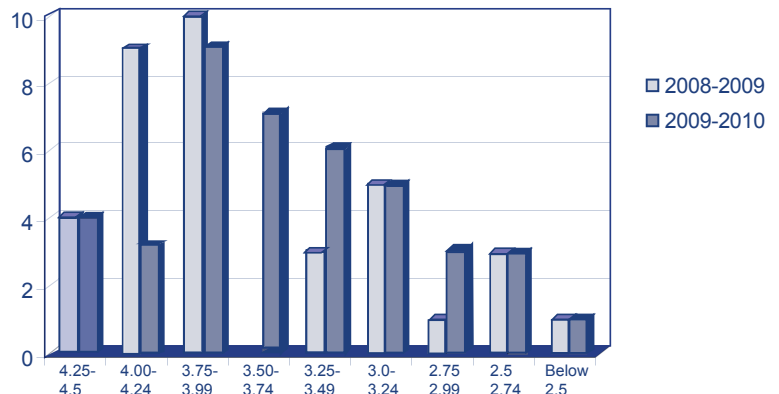
Virtually all O'Neal students are actively involved in the school's extensive extra-curricular, athletic and community service programs. Students have the opportunity to compete on academic as well as athletic teams, and to participate in such student-led activities as Student Government, Honor Council, Key Club, the Student Environmental Action Coalition (SEAC), Model United Nations, and the O'Neal Volunteers. O'Neal students, teams, and clubs have won numerous commendations and awards at local, state and national levels.

### CLASS RANK & G.P. A.

Given a selective admissions policy, a college preparatory curriculum, and small graduating classes, the school does not rank students. Only core academic courses and academic elective courses are included in students' grade point average. Advanced Placement courses are weighted by adding 0.75 to the quality point for that course. Beginning with the class of 2011, AP courses will be weighted by adding 1.0 to the quality point for that course. High Honors requires an average of A-, with no grade below B; Honors, an average of B, with no grade below B-.

Grading Scale		
A+	97-100	4.25
A	93-96	4.00
A-	90-92	3.75
B+	87-89	3.5
B	83-86	3.25
B-	80-82	3.00
C+	77-79	2.75
C	73-76	2.5
C-	70-72	2.25
D+	67-69	2.00
D	63-66	1.50
D-	60-62	1.00

**Number of Seniors Attaining the Respective Cumulative Averages**  
**2-Year Comparison**



## UPPER SCHOOL CURRICULUM

Subject	Courses	AP Courses
<b>ENGLISH</b> 4 Credits	Introduction to Literature • American Literature • British Literature • World Literature • Modern Novels • Literature of Science Fiction and Fantasy	AP English Language AP English Literature
<b>MATHEMATICS</b> 4 Credits including: Algebra I • Algebra II • Geometry	Algebra I • Algebra II • Geometry • Pre-Calculus • Integrated Mathematics • Calculus • Advanced Topics in Math I,II	AP Calculus AP Statistics
<b>SCIENCE</b> 3 Credits including: 1 Biological / Life Science 1 Physical Science	Biology • Conceptual Biology • Chemistry • Conceptual Chemistry • Physics • Environmental Science	AP Biology AP Physics AP Environmental Science AP Chemistry
<b>FOREIGN LANGUAGES</b> 2 Credits of One Language / 3 Credits Strongly Recommended	French I, II, III, IV Latin I, II, III Spanish I, II, III, IV	AP French AP Latin AP Spanish
<b>HISTORY</b> 3 Credits including U.S. History	Ancient World History • Modern World History • U.S. History • Sociology • Psychology • Economics • Social Cultures • 21st Century US Foreign Policy • Contemporary Presidential Politics • History through Film • History of War • Heroes and Villians of History • Comparative Government	AP European History AP U.S. History AP U.S. Government AP Art History
<b>FINE ARTS</b> 1 Credit	Art I • Photography • Pottery • Drawing • Chorus • Theatre I,II • Playwriting Seminar • Production	<i>Qualified eighth grade students may take courses in The Upper School, leading to acceleration in foreign languages and mathematics.</i>
<b>ELECTIVES</b> 2 Credits are Required	Yearbook • Computer Hardware and Software • Public Speaking • Film • Philosophy • Senior Seminar • Theory of Knowledge	
<b>PHYSICAL EDUCATION</b> - 1 Credit - In addition: at least 2 elective credits required.		
<b>COMMUNITY SERVICE</b> - At least 36 hours of service to the community.		

### SAT SCORES AS OF JUNE 2009 FOR CLASS OF 2010

	Average of Top 25%	Average of Middle 50%	Average of Bottom 25%
Critical Reading	640	580	530
Math	630	600	580
Writing	660	590	540
Total	1930	1770	1650

### COLLEGE ACCEPTANCE PROFILE

*Class of 2007 (47 students); Class of 2008 (38 students) , Class of 2009 (41 students) Bold indicates colleges students are attending.*

<b>Appalachian State University</b>	Fordham University	<b>Princeton University</b>	<b>Music</b>
<b>Appalachian State University Honors College</b>	Furman University	Roanoke College	<b>UNC-Wilmington</b>
Auburn University	Georgia Institute of Technology	<b>Sandhills Community College</b>	<b>UNC-Wilmington Honors Program</b>
<b>Belmont Abbey College</b>	<b>Gettysburg College</b>	Santa Clara University	<b>University of Notre Dame</b>
Bentley College	Hampden-Sydney Honors College	Sierra Nevada College	University of Pittsburgh
<b>Bethune-Cookman University</b>	<b>High Point University</b>	<b>Smith College</b>	Honors College
Boston College	Hollins University	<b>Southeastern Junior College</b>	University of Pittsburgh
<b>Brown University</b>	James Madison University	<b>Southern Methodist University</b>	School of Engineering
<b>Campbell University</b>	Lenoir-Rhyne College	<b>St. John's College</b>	University of Richmond
Case Western University	Liberty University	St. Lawrence University	<b>University of San Diego</b>
<b>Central Wyoming College</b>	<b>Louisburg College</b>	<b>Sweet Briar College</b>	<b>University of Southern California</b>
<b>Charleston Southern University</b>	Lynchburg College	<b>The Blair Academy</b>	University of Tampa
<b>Clemson University</b>	<b>Meredith College</b>	<b>Toccoa Falls College</b>	University of Tennessee at Knoxville
<b>Clemson University Honors Program</b>	<b>Montreat College</b>	Tulane University	<b>Vanderbilt University</b>
<b>College of Charleston</b>	New York College of Art and Design	<b>University of Alabama</b>	Virginia Polytechnic Institute
Colorado Mountain College	<b>New York University Honors Program</b>	University of Central Florida	Villanova University
<b>Covenant College</b>	NC State College of Engineering	<b>University of Georgia</b>	<b>Wake Forest University</b>
Drexel University	<b>NC State University</b>	<b>University of Kansas</b>	Washington & Lee University
<b>Duke University</b>	<b>NC State University Scholars Program</b>	University of Kentucky	<b>Western Carolina University</b>
<b>East Carolina University</b>	<b>Oklahoma City University</b>	University of Miami	Wingate University
Elon University	Peace College	<b>University of Mississippi</b>	<b>Wofford College</b>
<b>Emory University</b>	<b>Pennsylvania State University</b>	<b>UNC-Asheville</b>	<b>WYOTech</b>
<b>Emory and Henry College</b>	Pfeifer University	<b>UNC-Chapel Hill</b>	
Florida A&M University	Presbyterian College	<b>UNC-Chapel Hill Honors Program</b>	
Florida State University	Prescott College	<b>UNC-Charlotte</b>	
		UNC-Greensboro	
		<b>UNC-Greensboro School of</b>	